



Technical Circular

No.: 009/2024

Date: 15th July 2024

Subject: Port of Port Hedland – CCTV camera at the steering gear flat for Cape size vessels (nominal deadweight > 120,000)

1. Port of Port Hedland, Australia, with a view to enhance navigational safety and operational efficiency within the Port, has implemented following new requirement with effect from **1 January 2025** for Cape size vessels entering and operating within the port.
 - a. All Cape size vessels (nominal deadweight > 120,000) will be required to be fitted with a minimum of one (1) Closed-Circuit Television (CCTV) rudder camera installed at the steering gear flat, positioned in such a way that clearly captures the rudder angles during manoeuvring.
 - b. A monitor is to be placed on the wheelhouse in the proximity of coning positions, providing real-time visual CCTV camera feedback of the rudder angle for Marine Pilot/bridge team reference during the transit to/from berth.
2. The purpose of this new requirement is to enhance the safety of navigation within the port by providing pilots with immediate visual feedback on the rudder position. This will;
 - Improve bridge team situational awareness.
 - Enhance decision-making during critical operations.
 - Reduce the risk of navigation-related incidents.
 - Enhance overall vessel handling and safety.
3. Compliance to above requirements will be verified by the Marine pilots.
4. Owners/ managers of vessels intending to call Port of Port Hedland are advised to be guided by above.

Enclosure:

1. Port Hedland Marine Safety Bulletin 02/2024, dated 30 May 2024.

Whilst the utmost care has been taken in the compilation of the Technical Information, neither Indian Register of Shipping, its affiliates and subsidiaries if any, nor any of its directors, officers, employees or agents assume any responsibility and shall not be liable to any person for any loss, damage or expense caused in any manner whatsoever by reliance on the information in this document.

Capesize vessels (nominal deadweight \geq 120,000) to be equipped with a CCTV camera at the steering gear flat

Issue Date: 30/05/2024

Mariners and Port users,

Pilbara Ports maintains a high focus on managing risk within Port Hedland's main shipping channel and inner harbour. To enhance navigational safety and operational efficiency within the Port of Port Hedland, Pilbara Ports are implementing a new requirement for Capesize vessels (nominal deadweight \geq 120,000) entering and operating within the port.

New Requirement:

Effective from 1st Jan 2025, all Capesize vessels (nominal deadweight \geq 120,000) are to be fitted with a minimum of one (1) Closed-Circuit Television (CCTV) rudder camera installed at the steering gear flat, positioned in such a way that clearly captures the rudder angles during manoeuvring.

A monitor must be placed on the wheelhouse in the proximity of coning positions, providing real-time visual CCTV camera feedback of the rudder angle for Marine Pilot/bridge team reference during the transit to/from berth.

Details:

CCTV Camera Installation:

- The CCTV camera must be mounted on top or in front of the rudder in the steering gear flat.
- The CCTV camera must be positioned to provide a clear and unobstructed view of the rudder angle.

Bridge Monitor:

- A CCTV camera monitor must be installed on the bridge where it is easily visible to the Marine Pilot/ bridge team.
- The CCTV camera monitor must display real-time footage from the steering gear flat, ensuring the pilot can accurately monitor and adjust the rudder angles during navigation.

System Requirements:

- The CCTV system should be robust and capable of functioning effectively in the maritime environment. It should provide high-resolution images and reliable performance in all operating conditions.

Purpose:

The purpose of this initiative is to enhance the safety of navigation within the port by providing pilots with immediate visual feedback on the rudder position. This will;

- Improve bridge team situational awareness.
- Enhance decision-making during critical operations.
- Reduce the risk of navigation-related incidents.
- Enhance overall vessel handling and safety.

Compliance:

All vessel operators of Capesize vessels (nominal deadweight \geq 120,000) are required to comply with this new safety measure by 01st January 2025.

Marine pilots will verify the availability and functionality of the system to ensure adherence to this requirement.

Support:

For assistance with installation or any queries regarding this new requirement, please contact Pilbara Ports Port Hedland Harbour Master Team: PH.HMTeam@pilbaraports.com.au

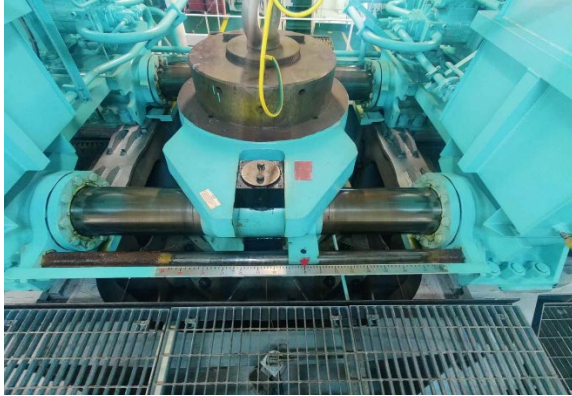
Pilbara Ports appreciates your cooperation and commitment to maintaining the highest standards of marine safety at the Port of Port Hedland.

Sample photos are attached below for your reference,



**Behrouz Daei Zadeh
Harbour Master East (Port Hedland)**

Picture Captured from a CCTV Camera in front of the rudder in steering flat



Sample of real-time feed to a CCTV Monitor in the wheelhouse.



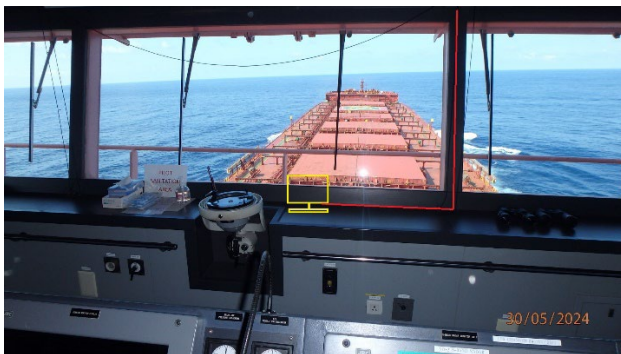
Proposed location AFT on the LO tanks



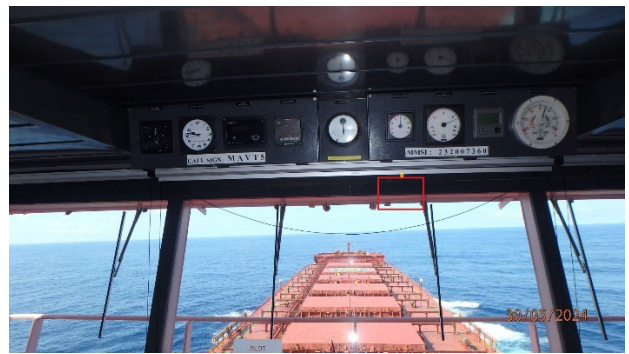
Proposed location of camera on the Phones and Gyro repeater panel



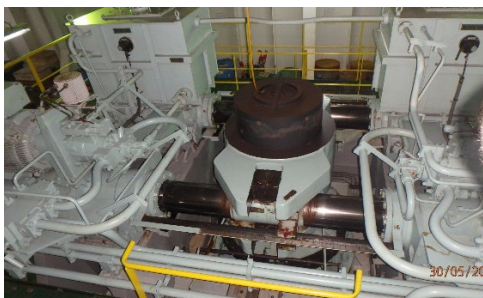
Proposed location of monitor on the Bridge



Proposed location on the Bridge



View from the Proposed location FWD on the Phones and Gyro repeater panel



View of camera if mounted on the LO tanks



All current local Marine Safety Bulletins are available on our website. Link: [Marine Safety Bulletins](#)
Please address any questions on this marine safety bulletin to the Port Hedland Marine Operations Team
Email: PH.HMTeam@pilbaraports.com.au